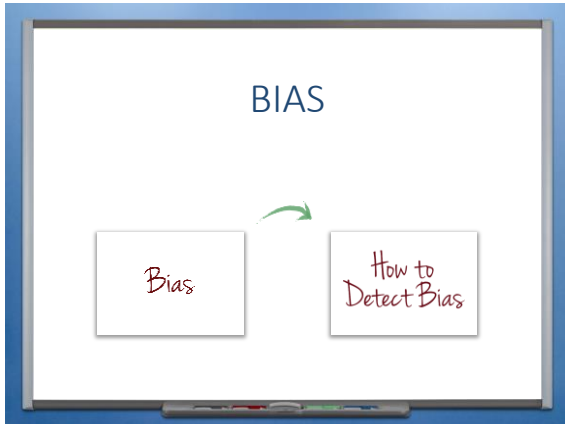
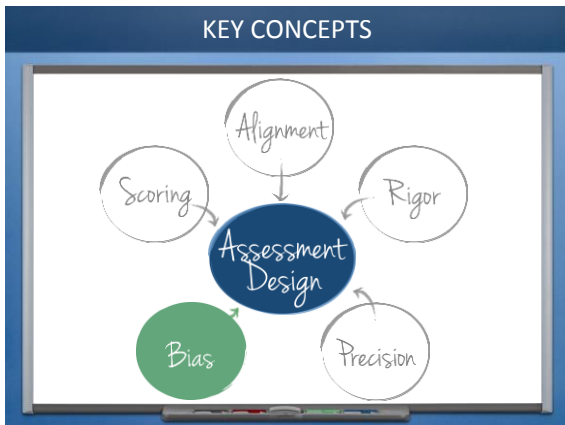
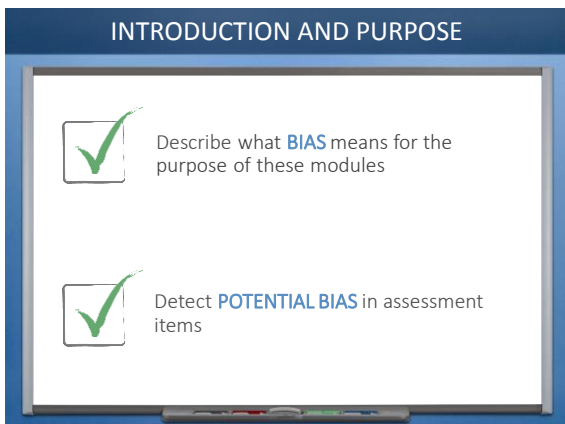


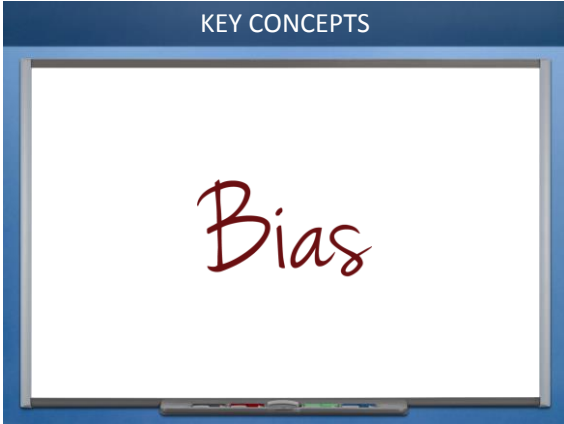
Bias

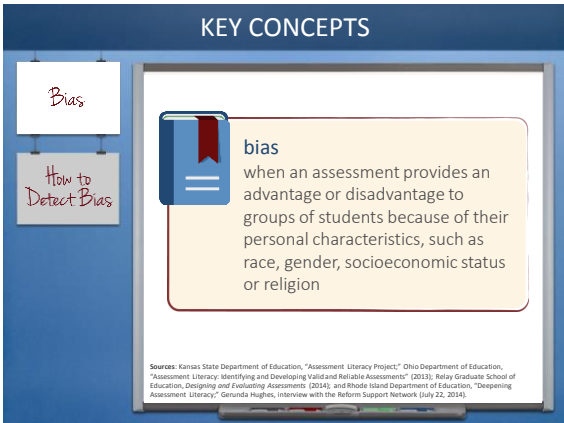


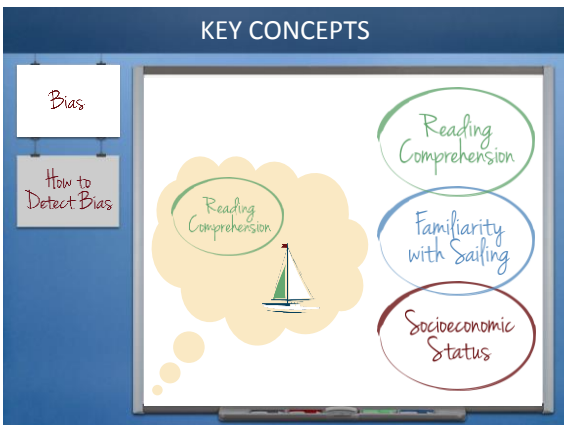




Bias







Bias

KEY CONCEPTS

Bias

How to Detect Bias

We detect bias at the group level, not the individual level.

KEY CONCEPTS

Bias

How to Detect Bias

Reading Comprehension

Reading Comprehension

Familiarity with Sailing

Socioeconomic Status

Source of Bias

KEY CONCEPTS

How to Detect Bias

Bias

KEY CONCEPTS

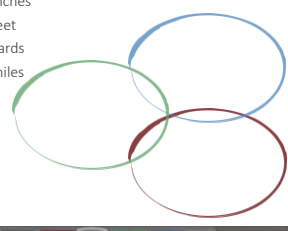
Bias

How to Detect Bias

Assessment Item

Which of the following measures could be the length of a typical hole in a golf course?

- a. 300 inches
- b. 300 feet
- c. 300 yards
- d. 300 miles



KEY CONCEPTS

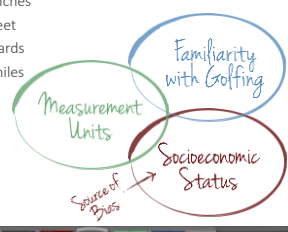
Bias

How to Detect Bias

Assessment Item

Which of the following measures could be the length of a typical hole in a golf course?

- a. 300 inches
- b. 300 feet
- c. 300 yards
- d. 300 miles



KEY CONCEPTS

Bias

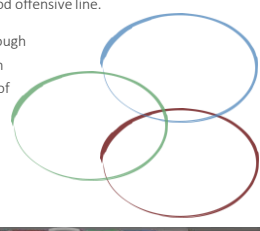
How to Detect Bias

Assessment Item

Choose the conjunction that completes the sentence.

Quarterbacks are often sacked during games _____ they do not have a good offensive line.

- a. even though
- b. although
- c. in spite of
- d. because



Bias

KEY CONCEPTS

Bias

How to Detect Bias

Assessment Item

Choose the conjunction that completes the sentence.

Quarterbacks are often sacked during games _____ they do not have a good offensive line.

- a. even though
- b. although
- c. in spite of
- d. because

Use of Conjunctions

Familiarity with Football

Gender

Subject Bias

KEY CONCEPTS

Bias

How to Detect Bias

Assessment Item

Choose the conjunction that completes the sentence.

Football quarterbacks, who line up directly behind the offensive line, are often tackled during games _____ they do not have a good offensive line.

- a. even though
- b. although
- c. in spite of
- d. because

KEY CONCEPTS

Bias

How to Detect Bias

Assessment Item

Choose the one answer that best solves the problem.

If one card is taken at random from a deck of playing cards, what is the probability that the card will be an ace?

- a. 8 percent
- b. 50 percent
- c. 25 percent
- d. 10 percent

Source: New Jersey Department of Education, 502-2.0—From *Compliance to Quality*, (2014).

Bias

KEY CONCEPTS

Bias

How to Detect Bias

Assessment Item

Choose the one answer that best solves the problem.

If one card is taken at random from a deck of playing cards, what is the probability that the card will be an ace?

- a. 8 percent
- b. 50 percent
- c. 25 percent
- d. 10 percent

Probability

Knowledge of the # of total cards and Aces in a Deck of Cards

KEY CONCEPTS

Bias

How to Detect Bias

We detect bias at the group level
not the individual level.

KEY CONCEPTS

Bias

How to Detect Bias

Assessment Item

Choose the one answer that best solves the problem.

If one card is taken at random from a deck of playing cards, what is the probability that the card will be an ace?

- a. 8 percent
- b. 50 percent
- c. 25 percent
- d. 10 percent

Probability

Knowledge of the # of total cards and Aces in a Deck of Cards

No Bias

Bias

KEY CONCEPTS

Bias

How to Detect Bias

Assessment Item

Mr. Torres sold a total of 30 boxes of sports cards at his store on Monday. These boxes contained only baseball cards and football cards.

Each box contained 25 sports cards. He earned \$3 for each sports card he sold. He earned a total of \$1,134 from the football cards he sold.

What amount of money did Mr. Torres earn from the baseball cards he sold? In the space below, use pictures, numbers and/or words to show how you got your answer.

Source: Oregon Department of Education, "Grade 4 Mathematics Sample ER Item Claim 2."

KEY CONCEPTS

Bias

How to Detect Bias

Assessment Item

Mr. Torres sold a total of 30 boxes of sports cards at his store on Monday. These boxes contained only baseball cards and football cards.

Each box contained 25 sports cards. He earned \$3 for each sports card he sold. He earned a total of \$1,134 from the football cards he sold.

What amount of money did Mr. Torres earn from the baseball cards he sold? In the space below, use pictures, numbers and/or words to show how you got your answer.

No Bias

KEY CONCEPTS

Bias

How to Detect Bias

Language

Which of the following measures could be the length of a typical hole in a golf course?

a. 300 inches
b. 300 feet
c. 300 yards
d. 300 miles

Measurement Units
Convert to Same Unit
Eliminate with Exaggeration
Succession of Steps

Math

Choose the conjunction that completes the sentence.

Quarterbacks are often sacked during games _____ they do not have a good offensive line.

a. even though
b. although
c. in spite of
d. because

Use of Conjunction
Eliminate with Exaggeration
Succession of Steps

Reasoning

Choose the one answer that best solves the problem.

If one card is taken at random from a deck of playing cards, what is the probability that the card will be an ace?

a. 8 percent
b. 50 percent
c. 25 percent
d. 10 percent

Probability
Succession of Steps
Eliminate with Exaggeration
Succession of Steps

Reasonable Amount of Time
Identifying Systematic Advantages and Disadvantages

Bias

CHECK FOR UNDERSTANDING



CHECK FOR UNDERSTANDING

- Describe what **BIAS** means for the purpose of these modules
- Detect **POTENTIAL BIAS** in assessment items

CHECK FOR UNDERSTANDING



Bias

CHECK FOR UNDERSTANDING



Assessment Item

1. Which of the following is most likely an example of bias in an assessment item?
 - a. An assessment item that is too rigorous for some students
 - b. An assessment item that assumes knowledge of religious traditions
 - c. An assessment item that includes typos and grammatical mistakes
 - d. A social studies assessment item with a political cartoon

CHECK FOR UNDERSTANDING



Assessment Item

1. Which of the following is most likely an example of bias in an assessment item?
 - a. An assessment item that is too rigorous for some students
 - b. An assessment item that assumes knowledge of religious traditions
 - c. An assessment item that includes typos and grammatical mistakes
 - d. A social studies assessment item with a political cartoon



CHECK FOR UNDERSTANDING



Answer

1. Which of the following is most likely an example of bias in an assessment item?
 - a. An assessment item that is too rigorous for some students
 - b. An assessment item that assumes knowledge of religious traditions
 - c. An assessment item that includes typos and grammatical mistakes
 - d. A social studies assessment item with a political cartoon

Bias

