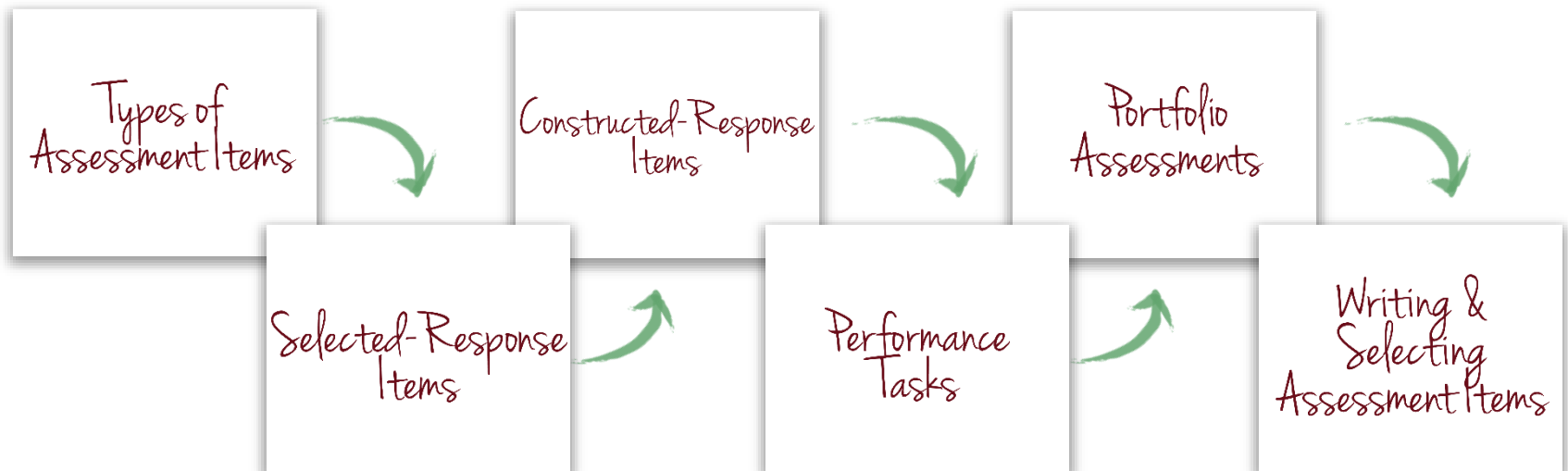


# TYPES OF ASSESSMENT ITEMS



# INTRODUCTION & PURPOSE



Identify, describe and tell the difference between three different **TYPES OF ASSESSMENT ITEMS**

# KEY CONCEPTS

Types of  
Assessment Items

# KEY CONCEPTS

Types of  
Assessment Items

Selected-Response  
Items

Constructed-Response  
Items

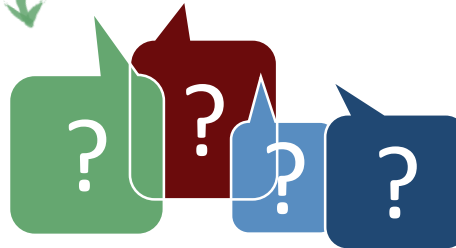
Performance  
Tasks

Portfolio  
Assessments

Writing & Selecting  
Assessment Items

Classroom  
Assessment

"Question"



"Item"



Selected Response



Constructed Response



Performance Tasks

# KEY CONCEPTS

Types of  
Assessment Items

Selected-Response  
Items

Constructed-Response  
Items

Performance  
Tasks

Portfolio  
Assessments

Writing & Selecting  
Assessment Items



Selected Response



Constructed Response



Performance Tasks

# KEY CONCEPTS

Selected-Response  
Items

# KEY CONCEPTS

Types of  
Assessment Items

Selected-Response  
Items

Constructed-Response  
Items

Performance  
Tasks

Portfolio  
Assessments

Writing & Selecting  
Assessment Items



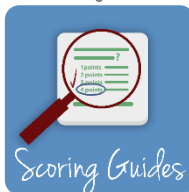
Selected Response



Students select a  
response



Answer Keys



Scoring Guides

Matching

True/False

Multiple Choice

**Sources:** Kansas State Department of Education, Assessment Literacy Project; Ohio Department of Education, "How to Design and Select Quality Assessments;" Relay Graduate School of Education, *Designing and Evaluating Assessments* (2014); Rhode Island Department of Education, "Deepening Assessment Literacy."

# KEY CONCEPTS

Types of  
Assessment Items

Selected-Response  
Items

Constructed-Response  
Items

Performance  
Tasks

Portfolio  
Assessments

Writing & Selecting  
Assessment Items



Assessment Item

What kind of an animal is a chameleon?

- a. mammal
- b. reptile
- c. bird
- d. insect

Multiple Choice



# KEY CONCEPTS

Types of  
Assessment Items

Selected-Response  
Items

Constructed-Response  
Items

Performance  
Tasks

Portfolio  
Assessments

Writing & Selecting  
Assessment Items



Assessment Item

Is the following statement true or false?

A chameleon is a type of lizard.

True/False

# KEY CONCEPTS

Types of  
Assessment Items

Selected-Response  
Items

Constructed-Response  
Items

Performance  
Tasks

Portfolio  
Assessments

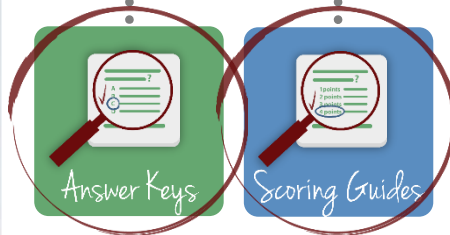
Writing & Selecting  
Assessment Items



Selected Response



Students select a  
response



Matching

True/False

Multiple Choice

# KEY CONCEPTS

Constructed-Response  
Items

# KEY CONCEPTS

Types of  
Assessment Items

Selected-Response  
Items

Constructed-Response  
Items

Performance  
Tasks

Portfolio  
Assessments

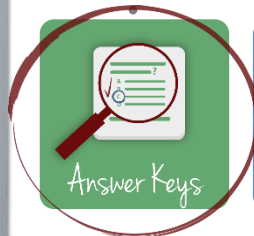
Writing & Selecting  
Assessment Items



⋮

Students  
construct a  
response

⋮



Fill in the  
Blank

**Sources:** Kansas State Department of Education, Assessment Literacy Project; Ohio Department of Education, "How to Design and Select Quality Assessments;" Relay Graduate School of Education, *Designing and Evaluating Assessments* (2014); Rhode Island Department of Education, "Deepening Assessment Literacy."

# KEY CONCEPTS

Types of  
Assessment Items

Selected-Response  
Items

Constructed-Response  
Items

Performance  
Tasks

Portfolio  
Assessments

Writing & Selecting  
Assessment Items



Assessment Item

The chameleon is a distinctive and well-known species of

\_\_\_\_\_.

Fill in the  
Blank

# KEY CONCEPTS

Types of  
Assessment Items

Selected-Response  
Items

Constructed-Response  
Items

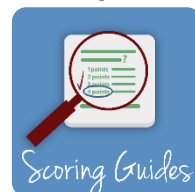
Performance  
Tasks

Portfolio  
Assessments

Writing & Selecting  
Assessment Items



Students  
construct a  
response



Short Answer

Longer Answer

# KEY CONCEPTS

Types of  
Assessment Items

Selected-Response  
Items

Constructed-Response  
Items

Performance  
Tasks

Portfolio  
Assessments

Writing & Selecting  
Assessment Items



Assessment Item

Describe at least three distinguishing features of chameleons. Use complete sentences.



# KEY CONCEPTS

Types of  
Assessment Items

Selected-Response  
Items

Constructed-Response  
Items

Performance  
Tasks

Portfolio  
Assessments

Writing & Selecting  
Assessment Items



Constructed Response

Short, Written  
Performance Tasks



# KEY CONCEPTS

Performance  
Tasks

# KEY CONCEPTS

Types of  
Assessment Items

Selected-Response  
Items

Constructed-Response  
Items

Performance  
Tasks

Portfolio  
Assessments

Writing & Selecting  
Assessment Items



Performance Tasks

Students create  
products or  
perform tasks to  
show their mastery  
of a particular skill



Scoring Guides



Rubrics

Extended  
Response

Essays

Experiment

Speech

Research  
Paper

**Sources:** Kansas State Department of Education, Assessment Literacy Project; Ohio Department of Education, "How to Design and Select Quality Assessments;" Relay Graduate School of Education, *Designing and Evaluating Assessments* (2014); Rhode Island Department of Education, "Deepening Assessment Literacy."

# KEY CONCEPTS

Types of  
Assessment Items

Selected-Response  
Items

Constructed-Response  
Items

Performance  
Tasks

Portfolio  
Assessments

Writing & Selecting  
Assessment Items



Selected Response



Constructed Response



Performance Tasks

Classroom  
Assessment



# KEY CONCEPTS

Types of  
Assessment Items

Selected-Response  
Items

Constructed-Response  
Items

Performance  
Tasks

Portfolio  
Assessments

Writing & Selecting  
Assessment Items



Selected Response



Constructed Response



Performance Tasks

Classroom  
Assessment



# KEY CONCEPTS

Portfolio  
Assessments

# KEY CONCEPTS

Types of  
Assessment Items

Selected-Response  
Items

Constructed-Response  
Items

Performance  
Tasks

Portfolio  
Assessments

Writing & Selecting  
Assessment Items



Selected Response



Constructed Response



Performance Tasks



Portfolios

Source: Kansas State Department of Education, Assessment Literacy Project.

# KEY CONCEPTS

Types of  
Assessment Items

Selected-Response  
Items

Constructed-Response  
Items

Performance  
Tasks

Portfolio  
Assessments

Writing & Selecting  
Assessment Items



Students or  
teachers collect  
student work  
products



Essays

Artwork

Lab  
Reports

Reading logs

Source: Kansas State Department of Education, Assessment Literacy Project.



# KEY CONCEPTS

Writing & Selecting  
Assessment Items



# KEY CONCEPTS

Types of  
Assessment Items

Selected-Response  
Items

Constructed-Response  
Items

Performance  
Tasks

Portfolio  
Assessments

Writing & Selecting  
Assessment Items

Write

Select



New

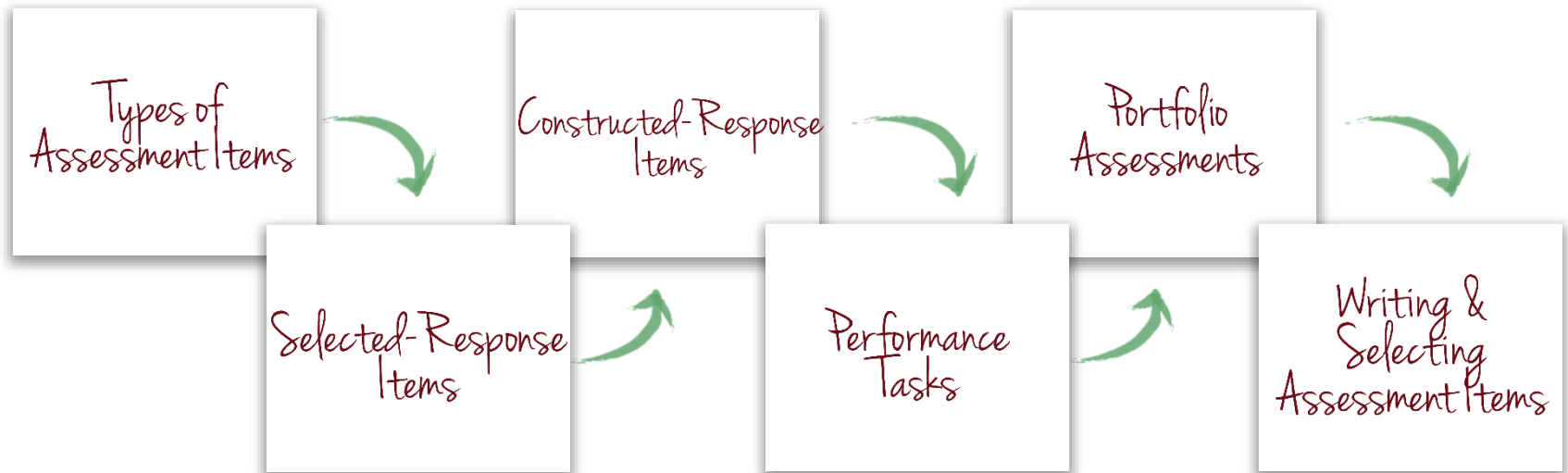


Curriculum  
Materials



Item Banks

# CHECK FOR UNDERSTANDING



# CHECK FOR UNDERSTANDING



Identify, describe and tell the difference between three different **TYPES OF ASSESSMENT ITEMS**

# CHECK FOR UNDERSTANDING



Assessment Item

# CHECK FOR UNDERSTANDING



## Assessment Item

Compare and contrast the three types of assessment items we discussed in this module according to how students demonstrate learning.

---

---

---

---

---

---

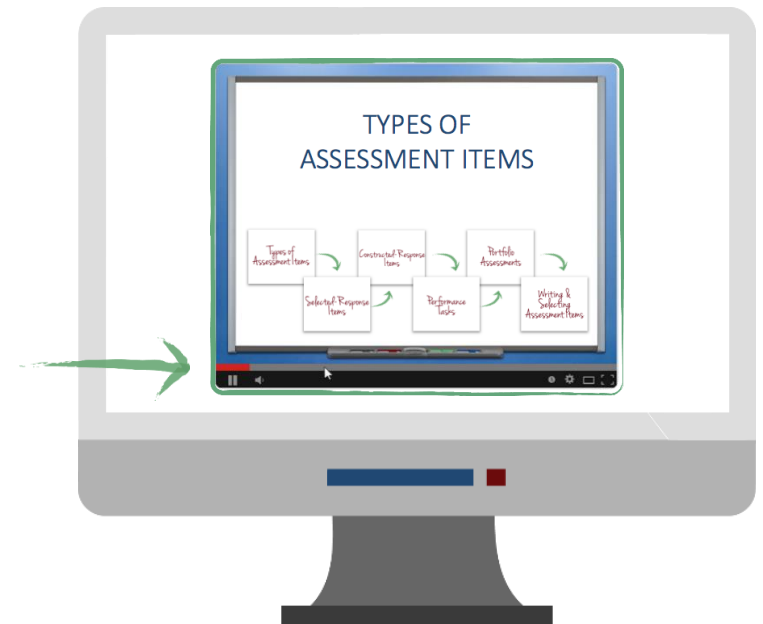
---

# CHECK FOR UNDERSTANDING



## Assessment Item

Compare and contrast the three types of assessment items we discussed in this module according to how students demonstrate learning.



# CHECK FOR UNDERSTANDING



## Answer

Compare and contrast the three types of assessment items we discussed in this module according to how students demonstrate learning.

*A sample answer to the item would be: Selected-response items ask students to select the correct answer from a list of options included in the item, while constructed-response items ask students to write, or construct, the correct answer instead of selecting it. Constructed-response items are similar to written performance tasks, which ask students to create products or perform tasks to show their mastery of particular skills. Unlike constructed-response items, performance tasks can also include verbal or physical tasks.*

# CONCLUSION

