

SETTING THE STAGE FOR FORMATIVE ASSESSMENT

PART 1: THE STATE'S ROLE



THE CENTER ON
STANDARDS &
ASSESSMENT
IMPLEMENTATION
WestEd® CRESST

September 20, 2017

The work reported herein was supported by grant number #S283B050022A between the U.S. Department of Education and WestEd with a subcontract to the National Center for Research on Evaluation, Standards, and Student Testing (CRESST). The findings and opinions expressed in this publication are those of the authors and do not necessarily reflect the positions or policies of CRESST, WestEd, or the U.S. Department of Education.

Formative Assessment Bi-Regional Advisory Board

Central Comprehensive Center

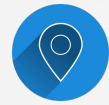
- Colorado
- Kansas
- Missouri

South Central Comprehensive Center

- Arkansas
- Louisiana
- New Mexico
- Oklahoma



Setting the Stage for Formative Assessment Webinar Series



1. State

2. District

3. School

4. Classroom



LEARNING GOALS



1. Understand how formative assessment fits into a comprehensive assessment system.
2. Define formative assessment as an instructional practice.

LEARNING GOALS



3. Illustrate the formative assessment process as it is implemented during the school year.
4. Explain how formative assessment is represented in ESSA.



ASSESSMENT



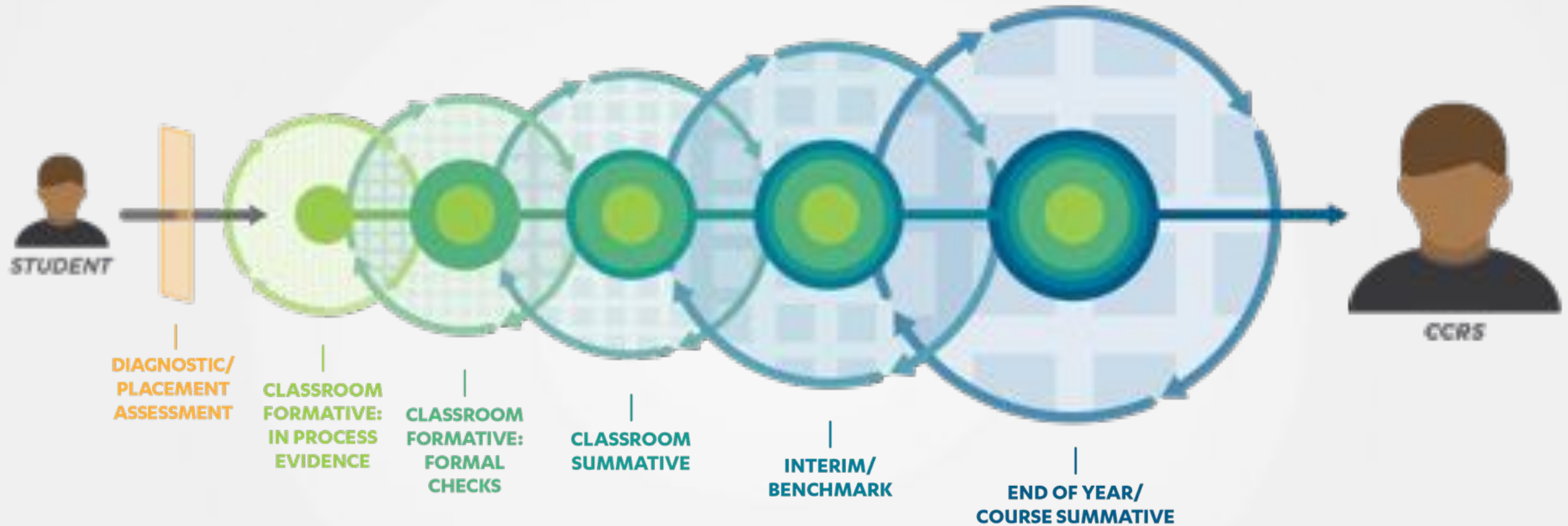
THE CENTER ON
STANDARDS &
ASSESSMENT
IMPLEMENTATION

WestEd  CRESST

Comprehensive Assessment System



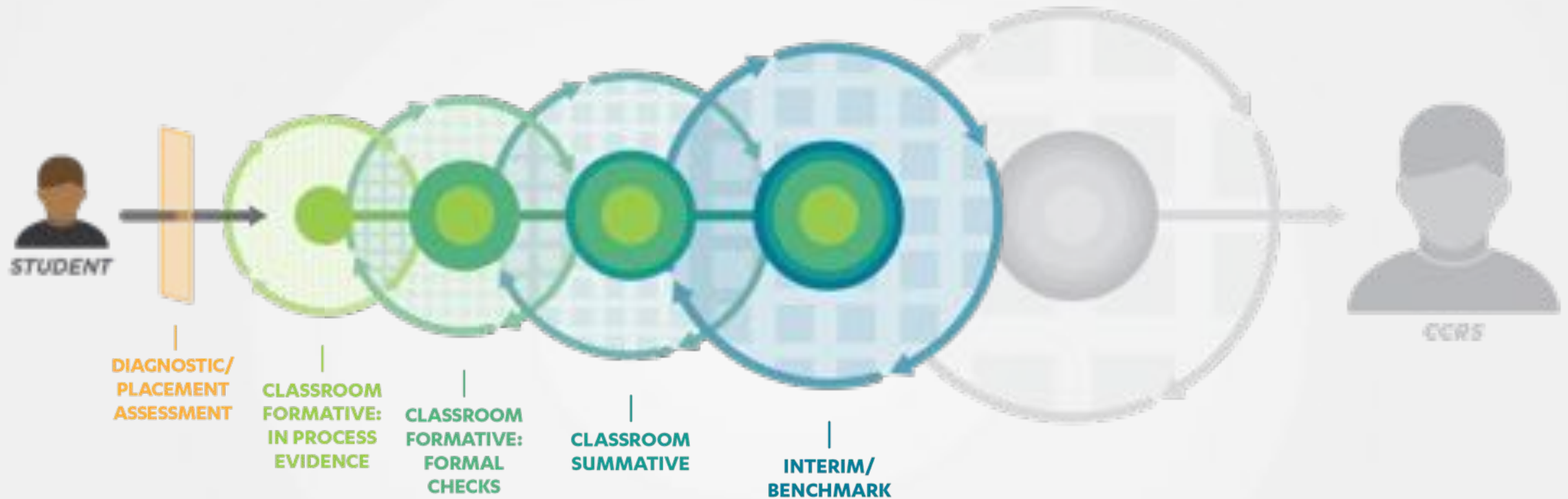
Comprehensive Assessment System



THE CENTER ON
STANDARDS &
ASSESSMENT
IMPLEMENTATION

WestEd CRESST

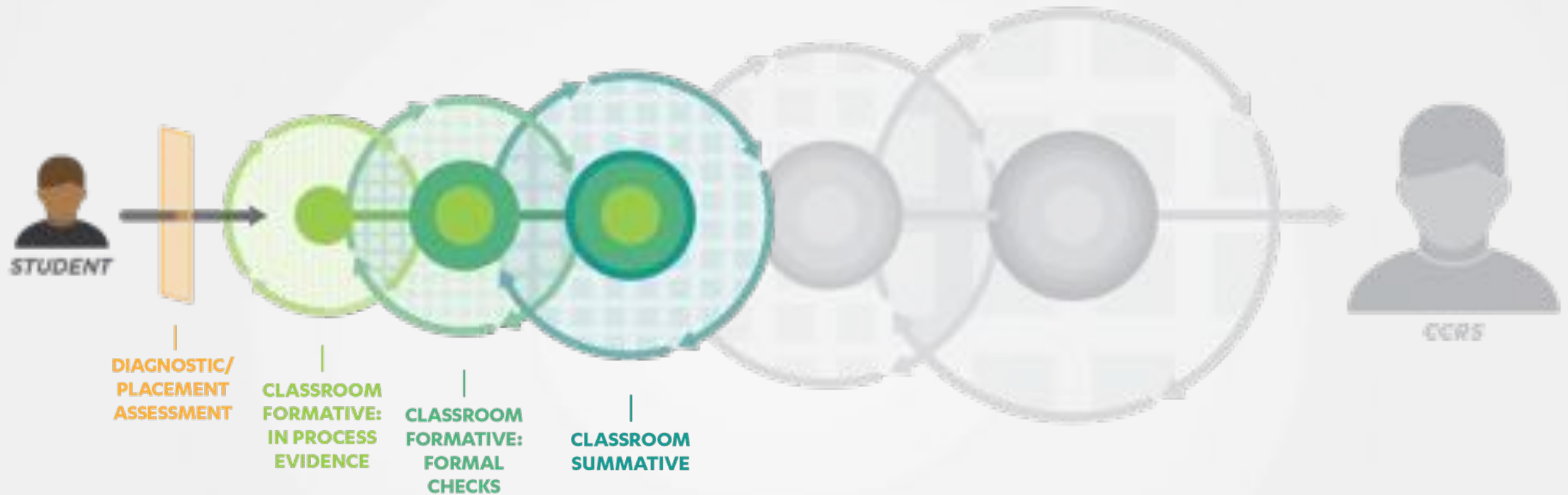
Comprehensive Assessment System



THE CENTER ON
STANDARDS &
ASSESSMENT
IMPLEMENTATION

WestEd CRESST

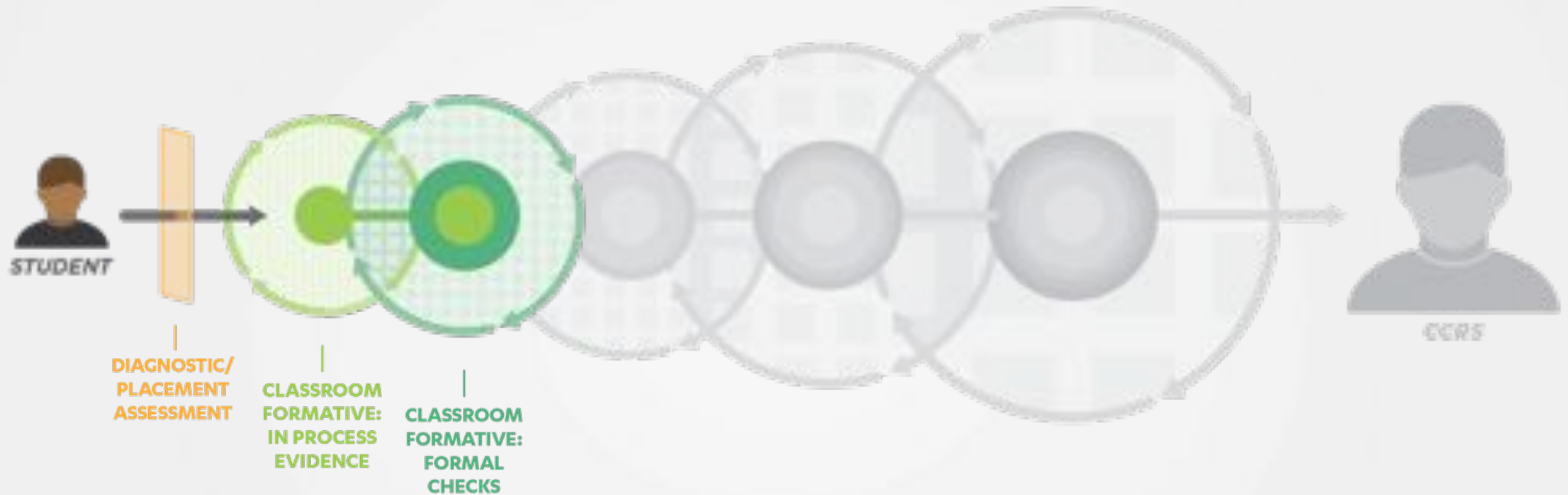
Comprehensive Assessment System



THE CENTER ON
STANDARDS &
ASSESSMENT
IMPLEMENTATION

WestEd CRESST

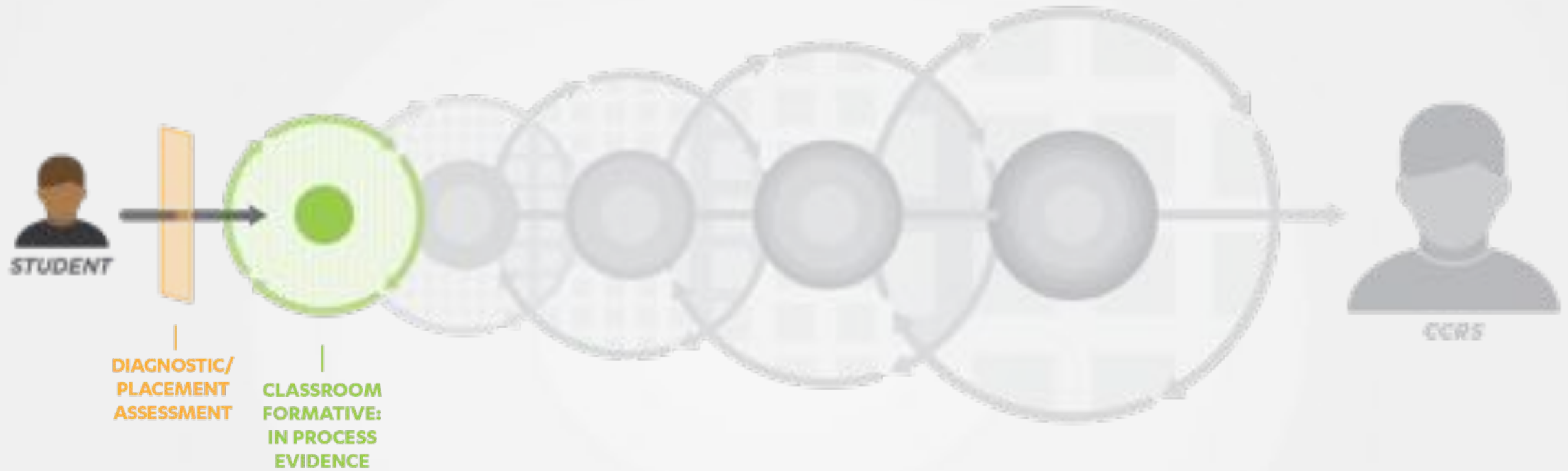
Comprehensive Assessment System



THE CENTER ON
STANDARDS &
ASSESSMENT
IMPLEMENTATION

WestEd CRESST

Comprehensive Assessment System



THE CENTER ON
STANDARDS &
ASSESSMENT
IMPLEMENTATION

WestEd CRESST

In the chat box...

What do you think is the next step for strengthening the role of formative assessment in your current assessment system?

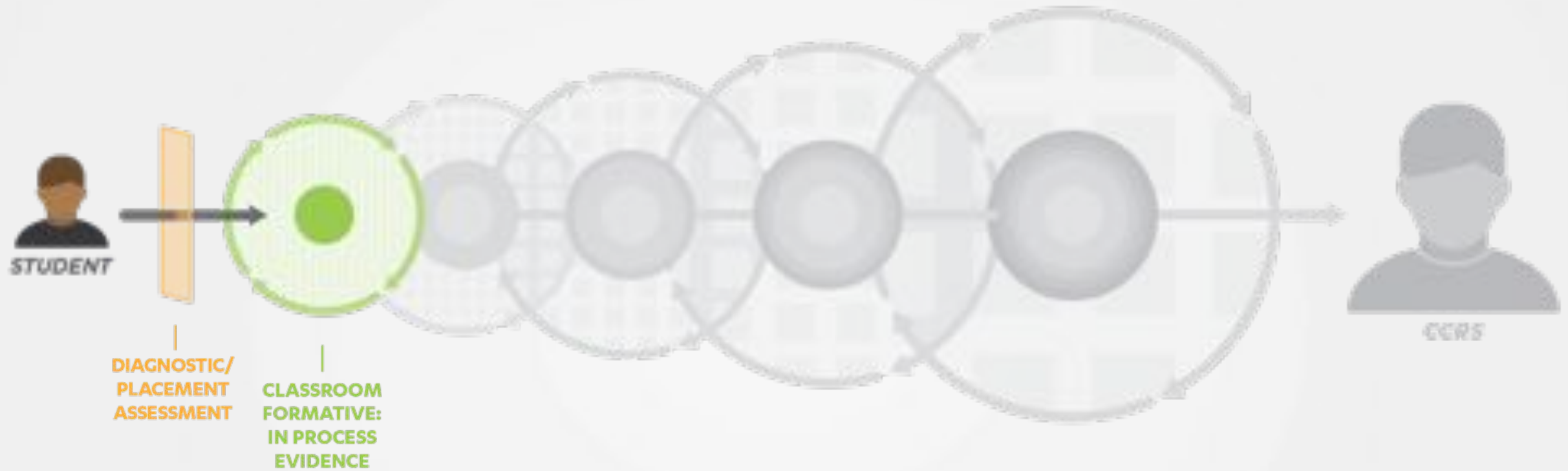


Participants said...

- developing common language and a definition of formative assessment in the state agency and across the state
- providing professional development
- sharing success stories that highlight the power of formative assessment
- ensuring that people understand the intents of and resources to support the comprehensive assessment system



Comprehensive Assessment System



THE CENTER ON
STANDARDS &
ASSESSMENT
IMPLEMENTATION

WestEd CRESST

Formative Assessment Process



FAST SCASS Definition

**Formative assessment is a process
used by teachers and students
during instruction
that provides feedback
to adjust ongoing teaching and learning
to improve students' achievement
of intended instructional outcomes.**

Council of Chief State School Officers (CCSSO)

Formative Assessment for Students and Teachers (FAST) State Collaborative on Assessment and Student Standards (SCASS)



Formative Assessment Process

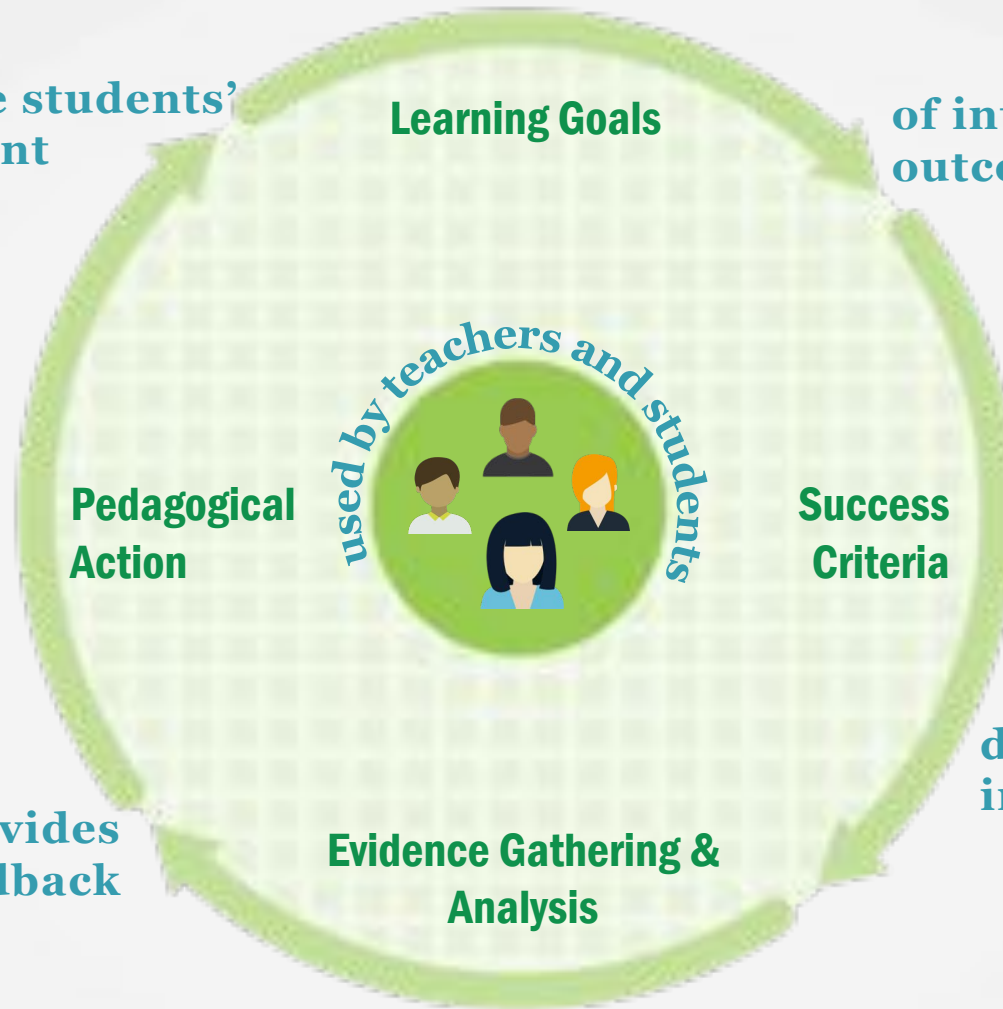
Formative
assessment
is a process

to improve students'
achievement

of intended instructional
outcomes

to adjust
ongoing
teaching and
learning

that provides
feedback



during
instruction



THE CENTER ON
STANDARDS &
ASSESSMENT
IMPLEMENTATION

WestEd  CRESST

In the chat box...

How would you persuade teachers to adopt formative assessment as an instructional practice?



Participants said...

- show great examples in both videos and in person
- show them data that supports formative assessment
- provide resources to help teachers see that it results in strategic interventions
- make it accessible to novice teachers
- collaborate within building with more expert teachers
- model formative assessment in adult learning and out-of-school contexts
- create different entry points for teachers at all levels of formative assessment knowledge and experience



Life Cycle of Formative Assessment

Comprehensive Assessment System









**Learning
Goals**

**Learning
Progressions**

Standards

Learning Goals reflect standards, disciplinary practices, academic language, and classroom context.

Learning Goals and Success Criteria are written in student-friendly language and shared with students.



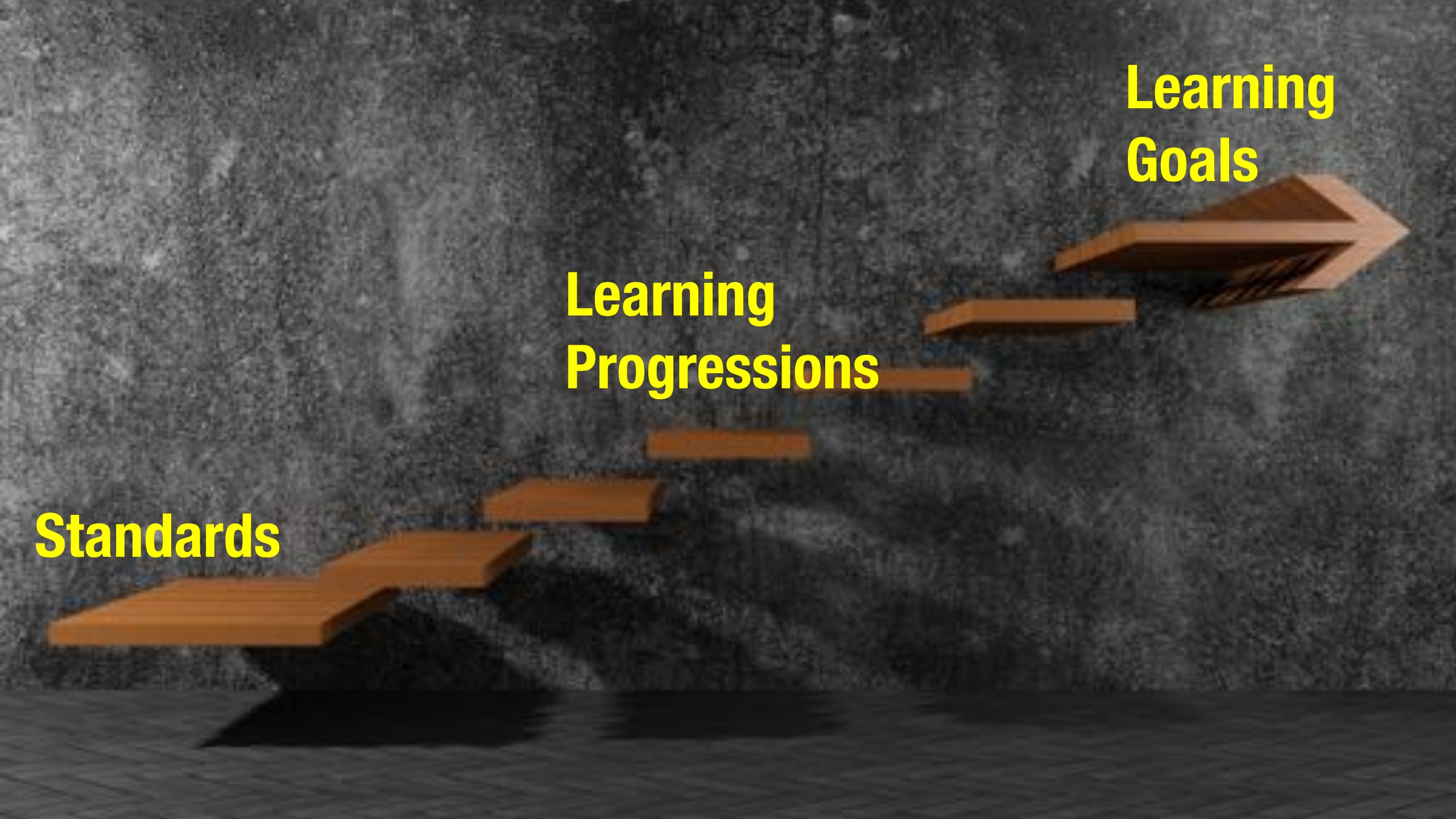
**Success Criteria
are observable.**



Standards

**Learning
Progressions**

**Learning
Goals**











Is it formative assessment?

ALIGNMENT

Does the assessment directly align with your learning goals for a lesson?



Is it formative assessment?

GRAIN SIZE

Does the assessment address a limited number (i.e., 1-3) learning goals?



Is it formative assessment?

FEEDBACK

Does the assessment provide evidence of student learning in relation to the learning goals? Can you use that evidence to take pedagogical action?



Is it formative assessment?

TIMING

Is the assessment embedded within an instructional activity? Can you use the evidence from the assessment to take pedagogical action within the same lesson, day, or week?



Is it formative assessment?

STUDENT INVOLVEMENT

Does the assessment provide students with specific feedback on their progress and next steps?



In the chat box...

Briefly describe your state's strongest achievement in implementing formative assessment.



Participants said...

- free and open curricular resources that promote formative assessment created by state agency
- inclusion in state strategic plan
- inclusion of formative assessment in state's model of the instructional cycle and assessment literacy
- participation in national initiatives that highlight formative assessment



Bringing the Vision to Reality

Every Student Succeeds Act (ESSA)





Key Component of a Balanced Assessment System



Evidence-Based Instructional Practice



Multi-Tier System of Support

In the chat box...

Think about one of your stakeholders.

**Taking one or more elements from ESSA,
explain to that person why formative
assessment is integral to student success.**

- **Key component of a balanced assessment system**
- **Evidence-based instructional practice**
- **Multi-tier support system**





Review



THE CENTER ON
STANDARDS &
ASSESSMENT
IMPLEMENTATION

WestEd  CRESST

How can formative assessment be supported at the state level?

Learning Goal #1

Understand how formative assessment fits into a comprehensive assessment system.

Success Criterion #1

What do you think is the next step for strengthening the role of formative assessment in your current assessment system?



How can formative assessment be supported at the state level?

Learning Goal #2

Define formative assessment as an instructional practice.

Success Criterion #2

How would you persuade teachers to adopt formative assessment as an instructional practice?



How can formative assessment be supported at the state level?

Learning Goal #3

Illustrate the formative assessment process as it is implemented during the school year.

Success Criterion #3

Briefly describe your state's strongest achievement in implementing formative assessment.



How can formative assessment be supported at the state level?

Learning Goal #4

Explain how formative assessment is represented in ESSA.

Success Criterion #4

Think about one of your stakeholders. Taking one or more elements of ESSA, explain to that person why formative assessment is integral to student success.

Setting the Stage for Formative Assessment Webinar Series

1. **State** CAS, definition, illustrations, ESSA
2. **District** disciplinary support, curriculum planning, diverse learners
3. **School** data analysis, lesson planning
4. **Classroom** teacher practice, student engagement



Handouts & Contact Information

www.csai-online.org/spotlight/setting-stage-formative-assessment-webinar

Sandy Chang, PhD, NBCT sandychang@ucla.edu

Julie Park Haubner, PhD, NBCT haubner@ucla.edu