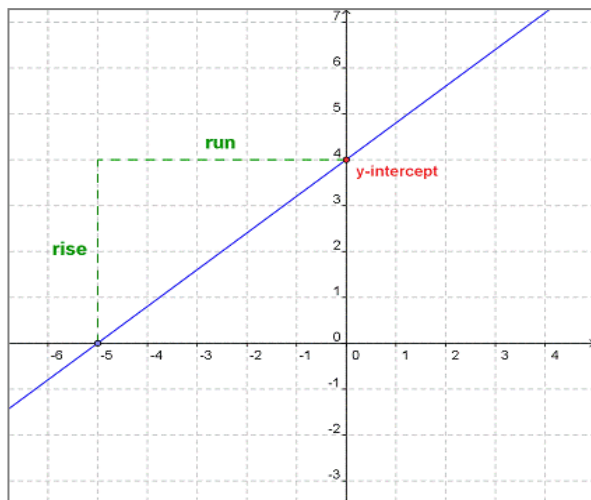


Mind Stretch



Slippery Slope

1. What is the slope of this line?



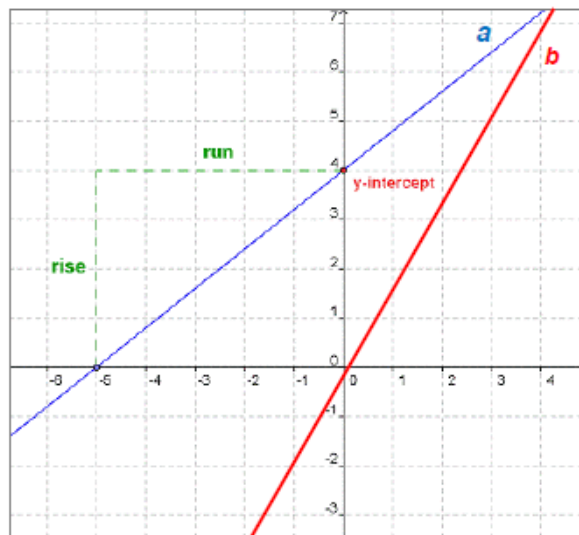
2. Draw a different line with the same slope.

¹ **Inspiration for Task:** The *Slippery Slope* Workout and Final Stretch have been adapted from Illustrative Mathematics materials, particularly the [Slopes Between Points on a Line](#) task, accessed on 5/1/2014, and is licensed by [Illustrative Mathematics](#) under [CC BY-NC-SA 4.0](#). The *Slippery Slope* challenge question has been adapted from Georgia Department of Education's Common Core Georgia Performance Standards Framework, Unit 5 [What's My Line](#) task accessed on January 23, 2014. According to the [Bureau of Labor Statistics](#), the average wage for a fast food worker in 2012 was \$8.84 per hour. We have revised this average slightly to make numbers more approachable for students.

3. Look at **line b**. The slope of **line b** is:

- a) steeper than the slope of **line a**
- b) equal to the slope of **line a**
- c) less steep than the slope of **line a**

I know this because....



¹ **Inspiration for Task:** The *Slippery Slope* Workout and Final Stretch have been adapted from Illustrative Mathematics materials, particularly the [Slopes Between Points on a Line](#) task, accessed on 5/1/2014, and is licensed by [Illustrative Mathematics](#) under [CC BY-NC-SA 4.0](#). The *Slippery Slope* challenge question has been adapted from Georgia Department of Education's Common Core Georgia Performance Standards Framework, Unit 5 [What's My Line](#) task accessed on January 23, 2014. According to the [Bureau of Labor Statistics](#), the average wage for a fast food worker in 2012 was \$8.84 per hour. We have revised this average slightly to make numbers more approachable for students.